

# **GEODE Vision on the Energy System and the Role of DSO**



**Skellefteå Kraft**



## Skellefteå Kraft in numbers

**126**

Wind power  
turbines

**28**

hydroelectric  
power plants

**813**

GWh of  
heating

Nuclear

**4,085**

GWh of  
electricity

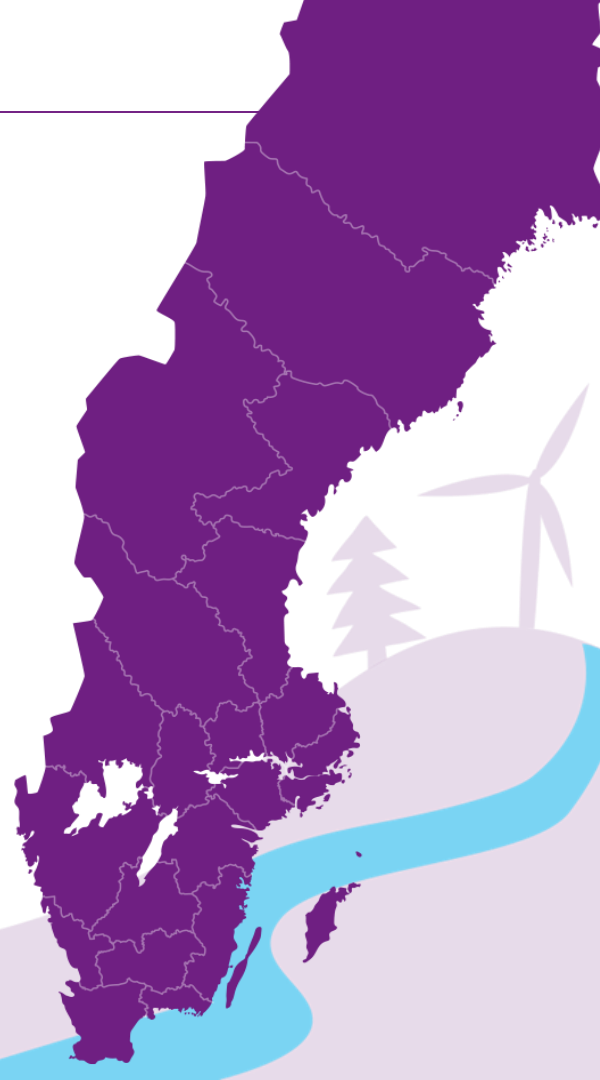
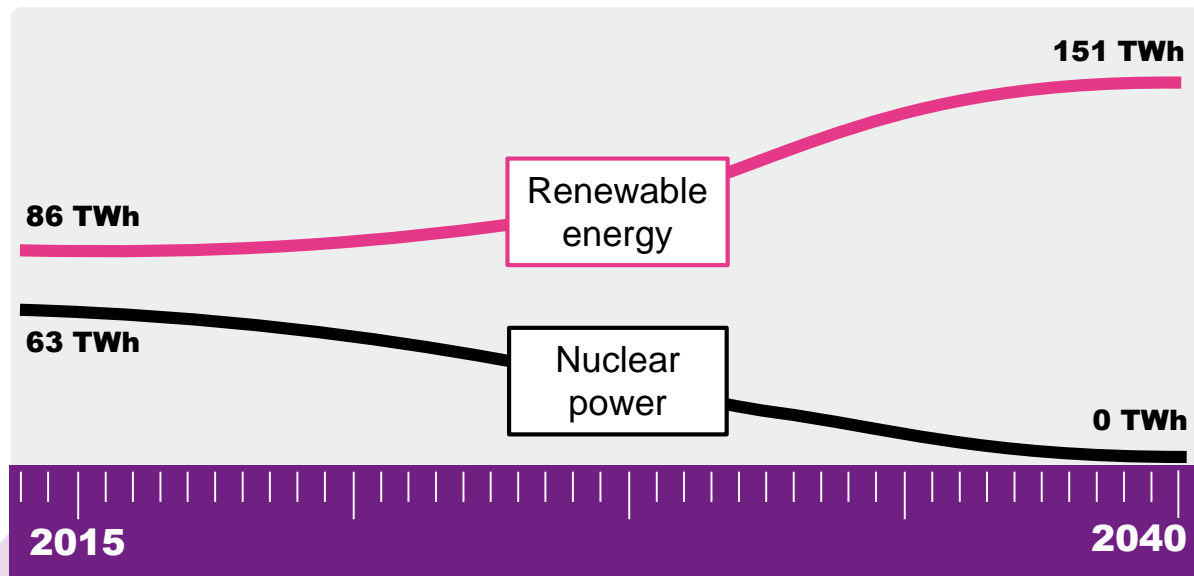
**12,000**

km of electricity  
grid



**We are in the middle of an energy transition**

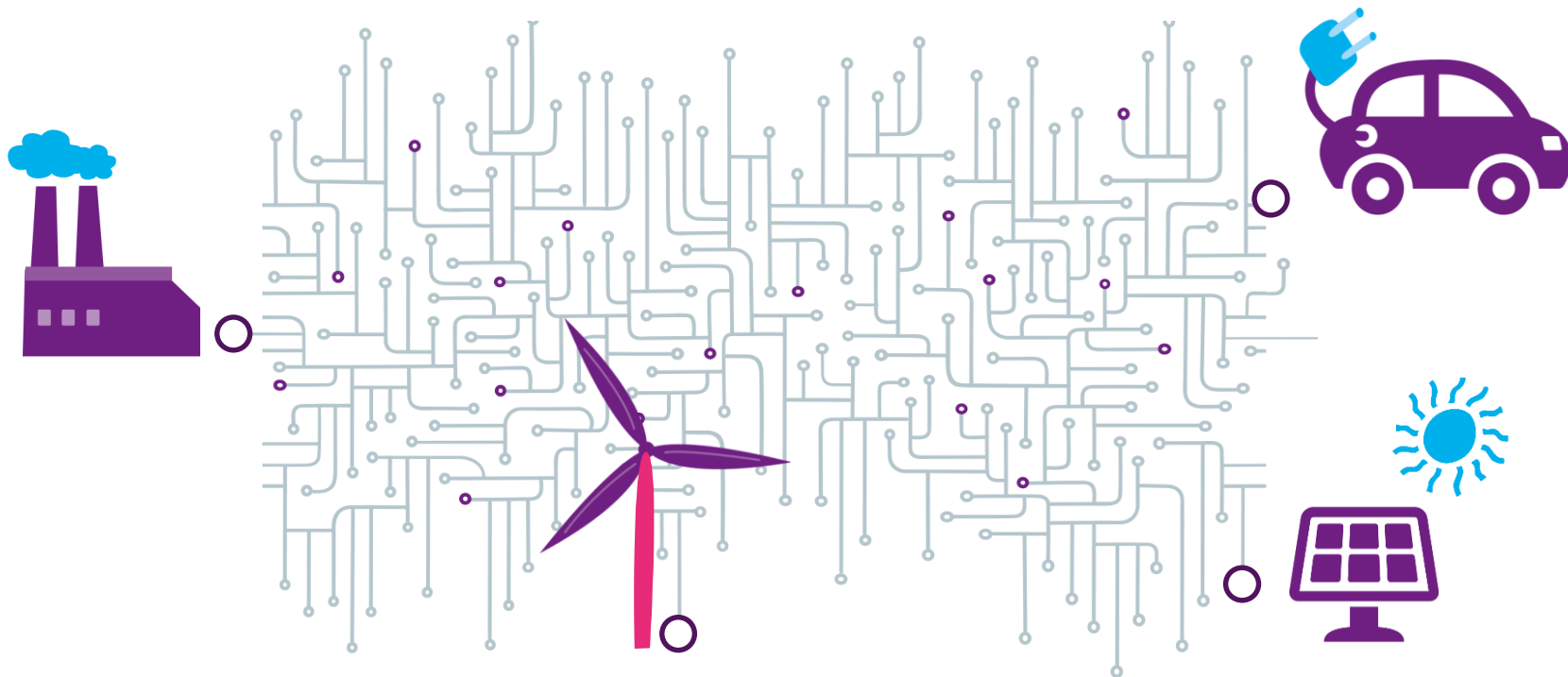
## Challenges: Integration of renewables





# Challenges:

## Complexity of the new system



# The role of DSOs is evolving

A photograph of a utility worker in a blue uniform and helmet, standing on a bucket truck and working on a high-voltage power line. The worker is positioned on the right side of the frame, reaching towards a horizontal metal crossarm. Several power lines are visible, stretching across the frame. The background is a cloudy sky. Three purple rectangular boxes with white text are overlaid on the lower half of the image.

**Active market  
facilitator**

**Cooperation  
with TSOs**

**Increased  
flexibility**

# How can DSOs increase flexibility?



- **Technical solutions**
- **Tariff solutions**
- **Connection agreement solutions**
- **Rules based solutions**
- **Market based solutions**

# Enabling technologies

Smart Grids

G2V- V2G

Gas based solutions

